

PART OF
THE FLEX SYSTEM

DUCT JOINING BLOCK

The duct joining block can assist you in joining ducts in almost all combinations between 14 and 50 mm.

Versatile adaptors and ducts

With Fremco's customized duct holders and adaptors, the Y-block is more flexible as it can be fitted into different sizes of ducts between 14-65 mm.

This means you can modify both ends of the Y-block to fit each specific overblow job.

Surface treated aluminium

The duct joining block can withstand air/water pressure up to 25 bar. Unlike a plastic connector, the joining block can be used again and again.

Uses the same cable sealings as the rest of the Fremco machines

DON'T FORGET TO ORDER

Adaptor and duct holder inserts (for inlet and outlet)

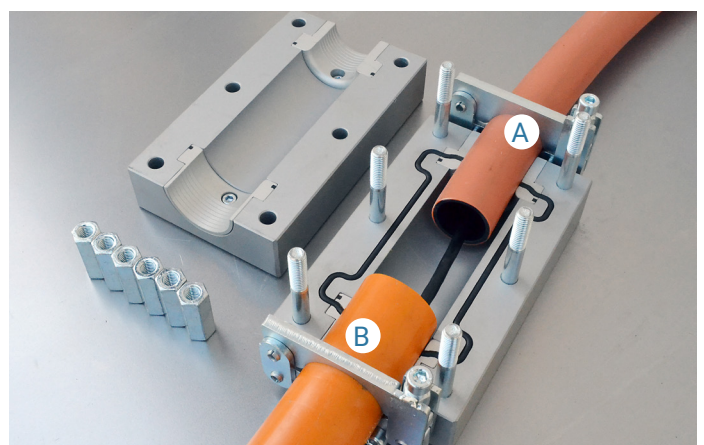
Different variants

Cable seals

Different variants in sizes between 4-25 mm

SPECIFICATIONS

Item No.:	103-10422
Pressure resistance:	Max. 25 bar
Length:	200 mm
Width:	120 mm
Height:	80 mm
Weight:	4.25 kg



A) Any 14, 16, 20, 25, 32, 40 or 50 mm duct
B) Any 14, 16, 20, 25, 32, 40 or 50 mm duct

