



Fiber/cable OD: 5.5-32 mm
Duct size OD: 10-63 mm

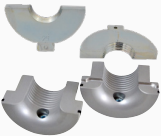
MULTIFLOW RAPID

Mandatory parts for usage



Nylon seals

You can choose between different sizes.



Adaptor and duct clamp set

You can choose between different sizes.



Box with cable sealing assortment

Cable sealings in sizes from 0-27 mm.



Chain set and support rails

Different variants of chains.



Control Valve & Hydraulic Power Pack

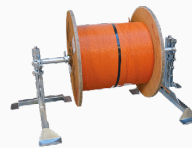
Recommended accessories for usage



Lubrication

We recommend FlowLUB 2000.

Utilization of lubrication during fiber blowing increases blowing distance by a factor of 2-3.



Drum rack

We recommend a drum rack for easy, safe roll out of fiber.



Sponges for duct cleaning

Clean duct with sponges before installing cable.

If you are in need of competent feedback on your fiber blowing project, do not hesitate to contact us.



MULTIFLOW RAPID FOR RELINING



Fiber/cable OD: 5.5-32 mm
Duct size OD: 10-63 mm

Mandatory parts for usage



Nylon guides for microduct
You can choose nylon guides for microduct in different variants.



Adaptor and duct clamp set
You can choose between different sizes.



Microduct guide set



Chain set and support rails
Different variants



Control Valve & Hydraulic Power Pack



Air/watertight plug
Different variants

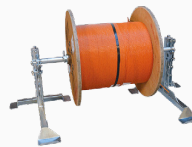


Valve for microduct
Different variants

Recommended accessories for usage



Lubrication
We recommend FlowLUB 2000.
Utilization of lubrication during fiber blowing increases blowing distance by a factor of 2-3.



Drum rack
We recommend a drum rack for easy, safe roll out of fiber.



Sponges for duct cleaning
Clean duct with sponges before installing cable.

If you are in need of competent feedback on your fiber blowing project, do not hesitate to contact us.

